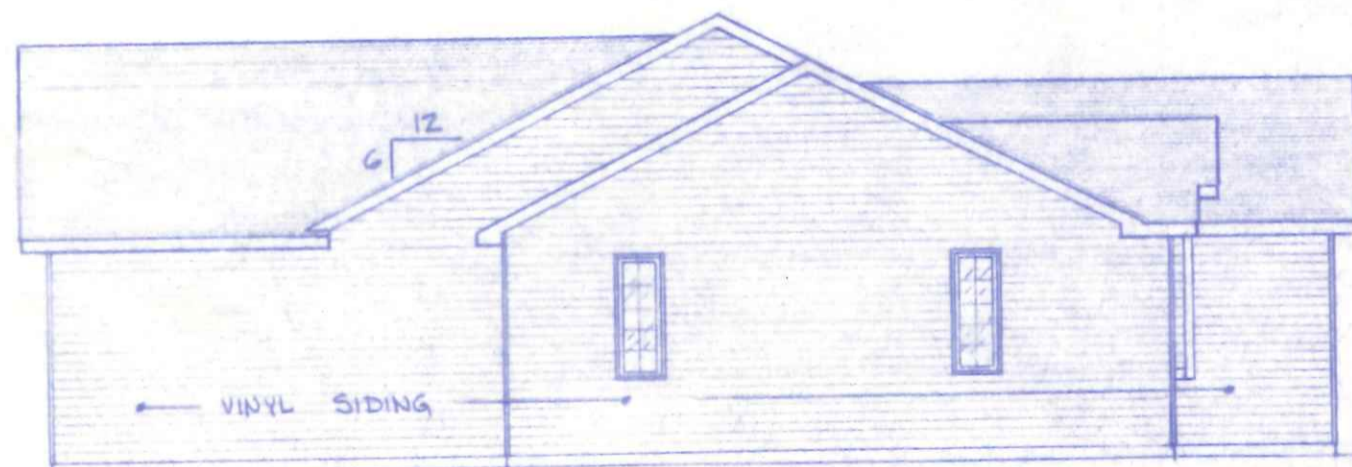
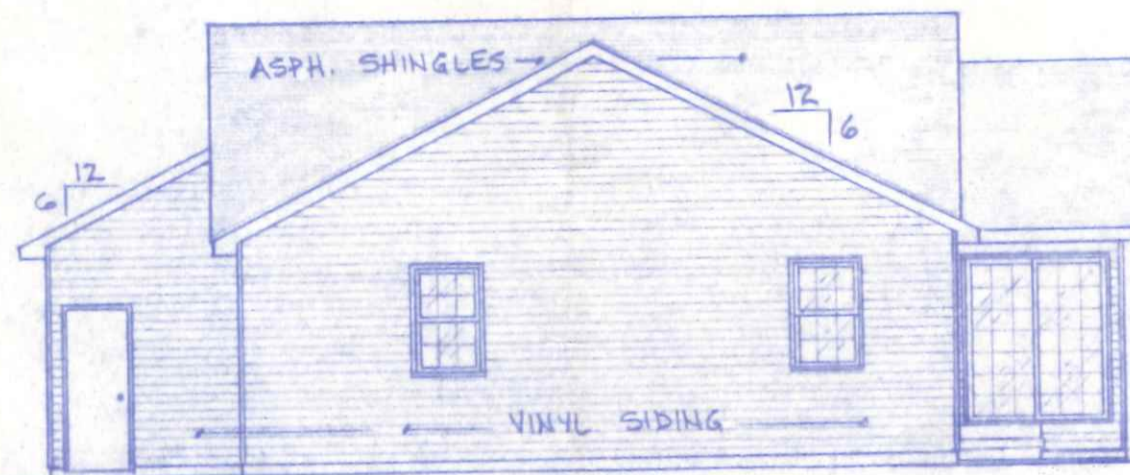


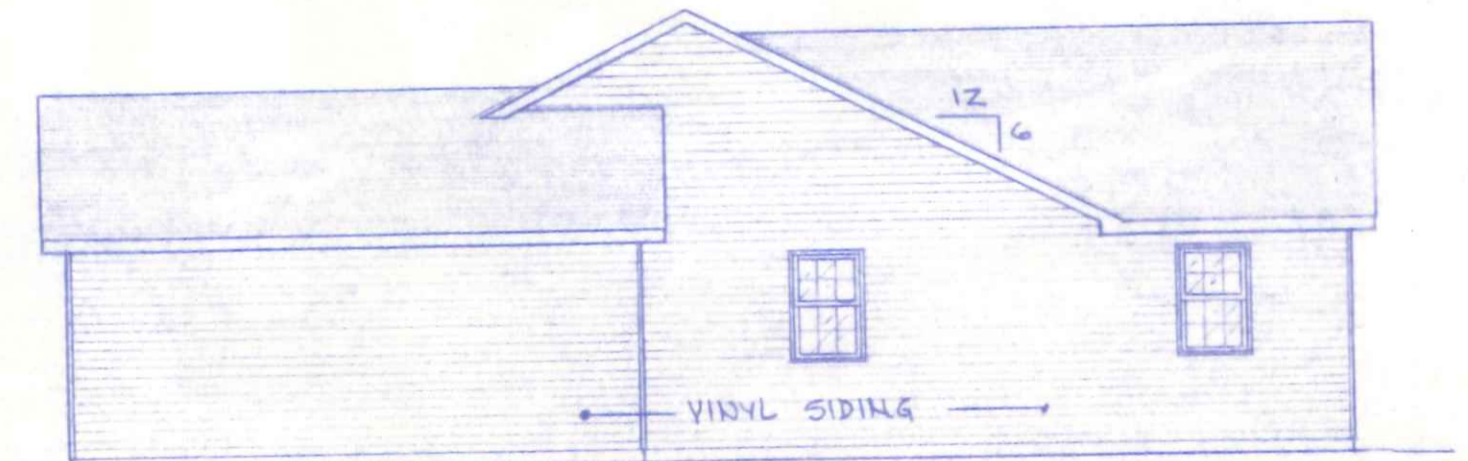
FRONT ELEVATION
1/4"=1'-0"



LEFT SIDE ELEVATION
1/8"=1'-0"



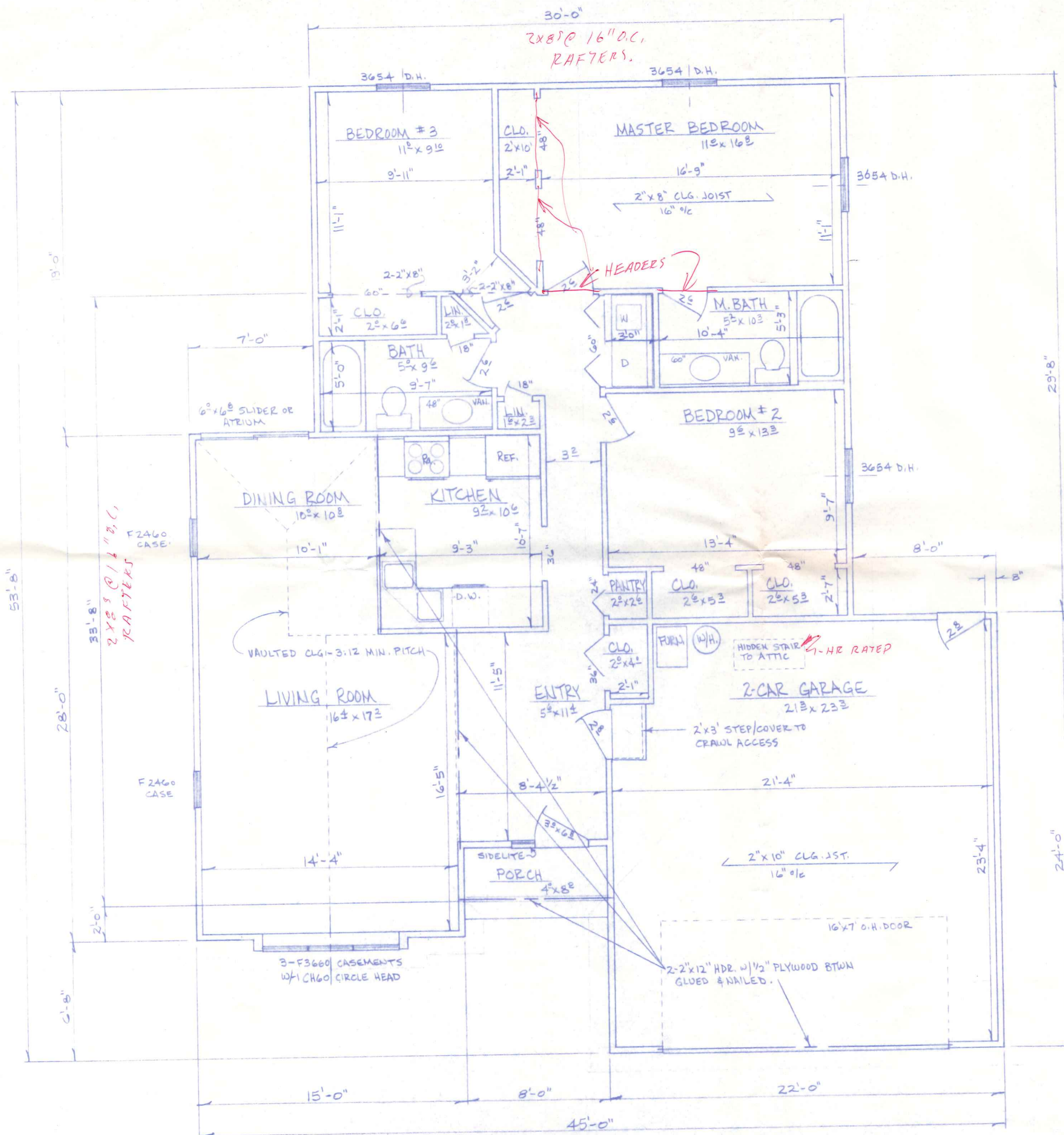
REAR ELEVATION
1/8"=1'-0"



RIGHT SIDE ELEVATION
1/8"=1'-0"

950 Melody

BECK CONSTRUCTION CO.		
CO. RD. M.		NAPOLEON, OHIO
SCALE: NOTED	APPROVED BY:	DRAWN BY RDS.
DATE: MAR, '89		REVISED
EXTERIOR ELEVATIONS		
PLAN. NO. 236		DRAWING NUMBER 1 OF 4



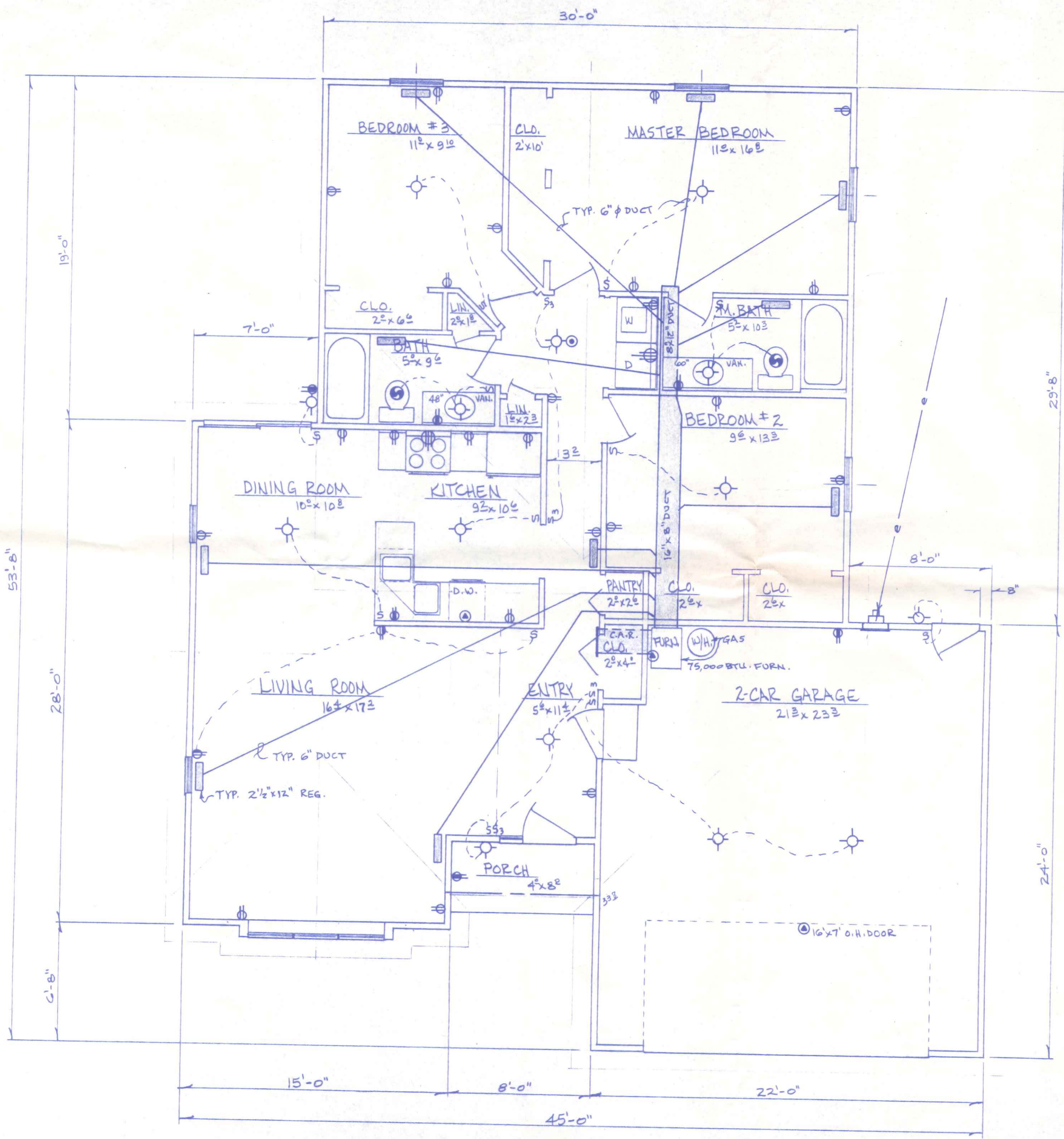
- NOTES:**
1. INTERIOR DIMENSIONS TAKEN TO STUD LINE, EXTERIOR DIMENSIONS TO OUTSIDE OF FOUNDATION.
 2. INTERIOR DOOR HEADERS TO BE MIN. 2-2"x6", EXTERIOR OPENING HEADERS TO BE MIN. 2-2"x6" FOR OPENINGS UP TO 4' WIDE, 2-2"x8" UP TO 8'0", & AS OTHERWISE NOTED.
 3. FRAMING LUMBER TO BE MIN # 2 S.P.F. KILN DRIED.

GROSS LIVING AREA = 1342.2 SQ. FT
 " GARAGE " = 509.0 " "
 " PORCH " = 32.0 " "

BECK CONSTRUCTION CO.		
CO. RD. M		NAPOLEON, OHIO
SCALE: 1/4" = 1'-0"	APPROVED BY:	DRAWN BY R.D.S.
DATE: MAR. '89		REVISED
FLOOR PLAN		
PLAN NO. 236		DRAWING NUMBER 2 OF 4

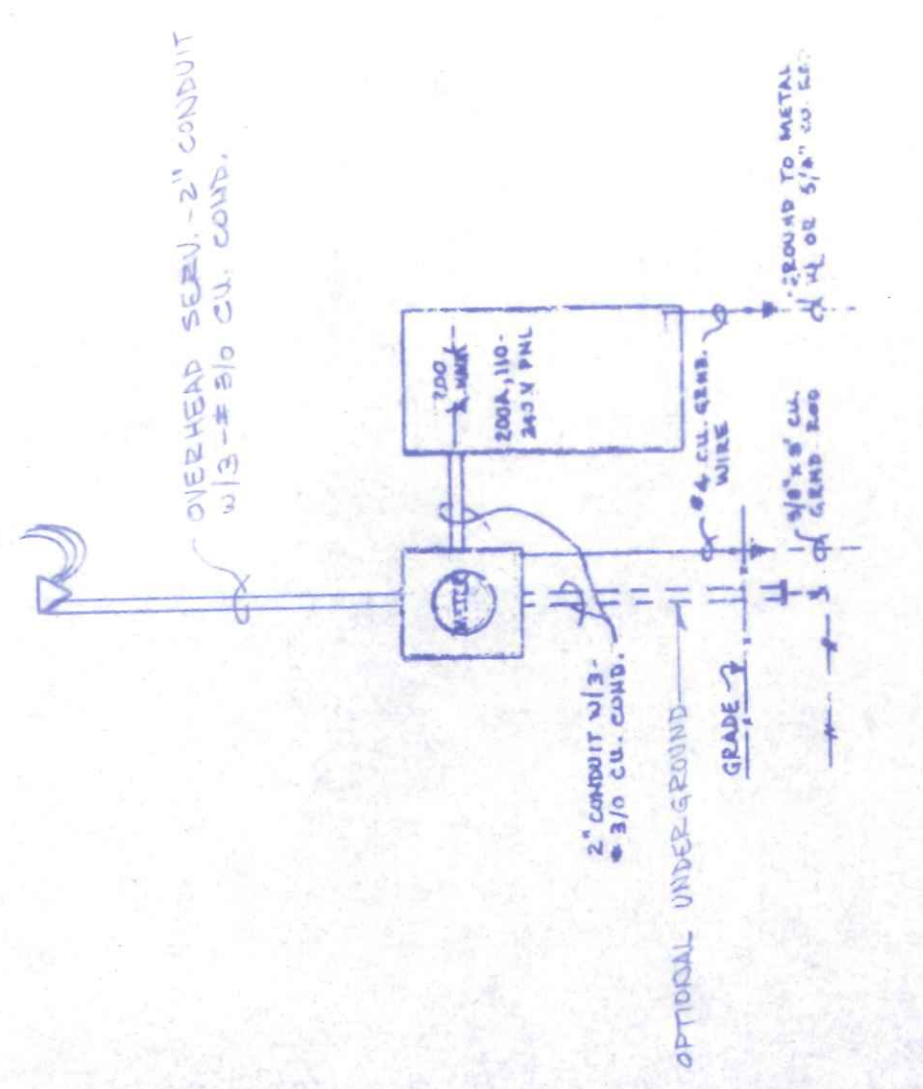
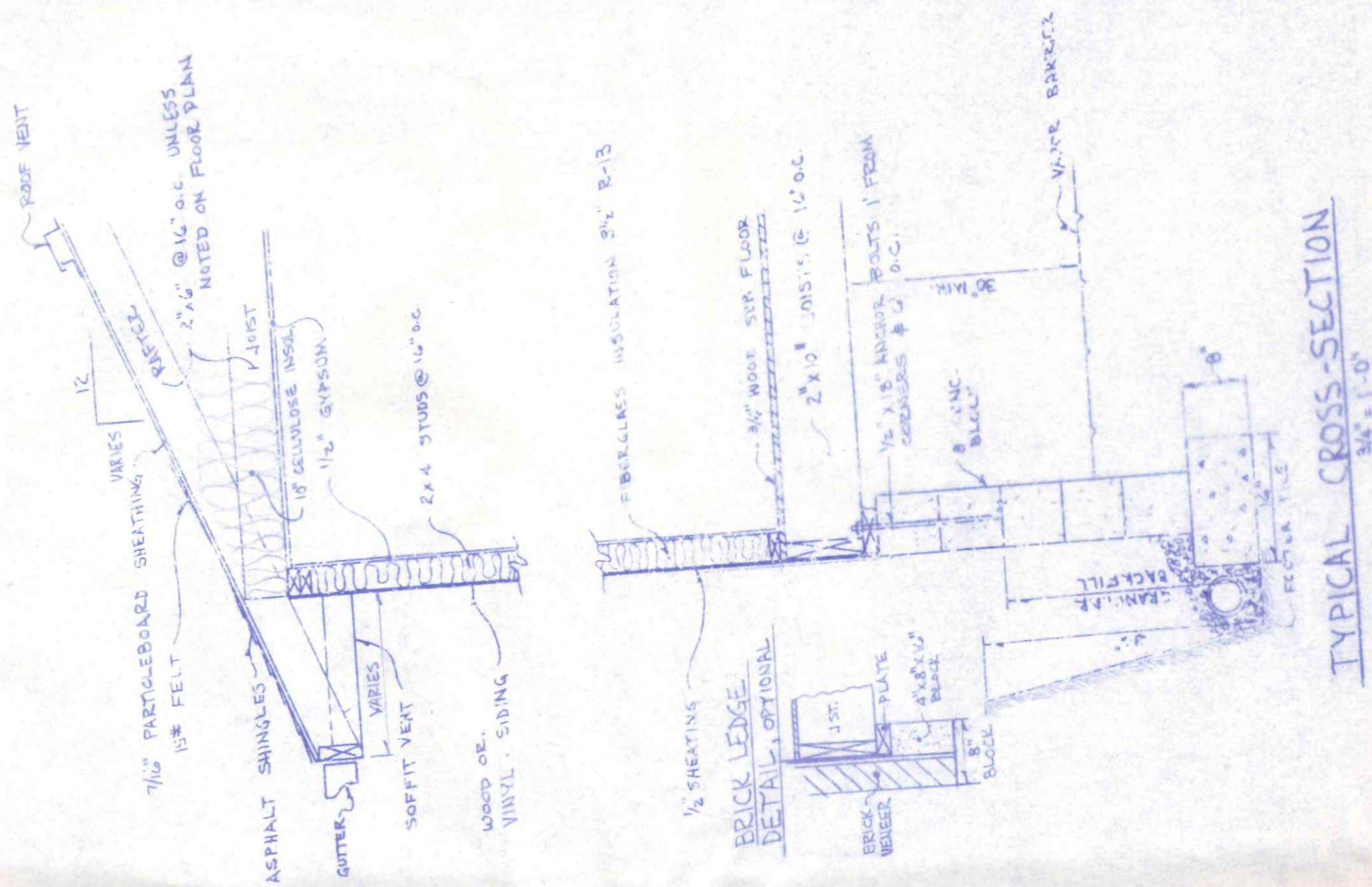
- ◇ CEILING LIGHT
- WALL LIGHT
- ⊙ CEILING CIRCULATING FAN
- ⊙+ CEILING LIGHT WITH CIRCULATING FAN
- ⊙+ CEILING LIGHT WITH EXHAUST FAN
- ⊙+ EXTERIOR FLOOD LIGHT
- ⊙ PRIMARY POWERED SMOKE DETECTOR WITH BATTERY BACKUP
- ⊙ SPECIAL OUTLET AS NOTED
- ⊙ 120V - 20A DUPLEX RECEPTACLE
- ⊙ 120V - 20A DUPLEX RECEPTACLE SWITCHED
- ⊙ 120V - 20A DUPLEX RECEPTACLE WITH G.F.C.I. PROTECTION
- ⊙ 240V APPLIANCE OUTLET
- ⊙ 120V - 20A LIGHT SWITCH
- ⊙ 120V - 20A FAN SWITCH
- ⊙ 120V - 20A 3 WAY LIGHT SWITCH

- NOTES
- 1) See Foundation Plan for Basement Electrical
 - 2) Min. 20A. CIR., #12 WIRE
 - 3) All Work and Material shall be as per National Electric Code



GROSS LIVING AREA = 1342.2 SQ. FT
 " GARAGE " = 509.0 " "

CO. REP. M		BECK CONSTRUCTION CO.	
SCALE: 1/4" = 1'-0"		NAPOLEON, OHIO	
DATE: MAR, '89	APPROVED BY:	DRAWN BY E.D.S.	
		REVISED	
FLOOR PLAN - ELECTRIC & HEATING			
PLAN NO. 236		DRAWING NUMBER	
		3 OF 4	



ELECTRICAL RISER DIAGRAM
NO SCALE

